

Talon PIPE SNUG



Code	Colour	Size	Pack Qty
PSB32	Black	32mm	Pack of 2
PSW32	White	32mm	Pack of 2
PSG32	Grey	32mm	Pack of 2
PSOG32	Olive Grey	32mm	Pack of 2
PSB40	Black	40mm	Pack of 2
PSW40	White	40mm	Pack of 2
PSG40	Grey	40mm	Pack of 2
PSOG40	Olive Grey	40mm	Pack of 2

32mm



40mm

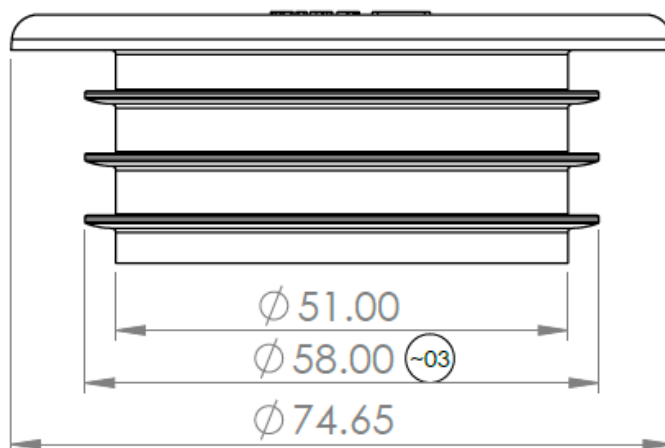
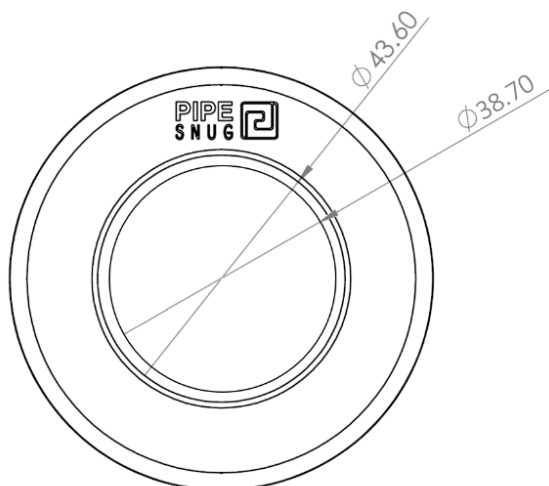


Talon PIPE SNUG

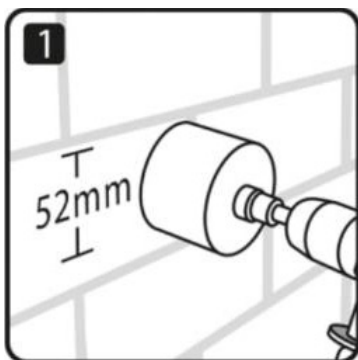
32mm

- Designed to fit 32mm 90 degree or swept solvent weld elbow bends (all UK manufacturer brands).
- Complies with Part L Building Regulations.
- Can be used internally and externally.
- For use with solvent weld waste pipe systems and boiler condensate pipes when fed into larger diameter 32mm waste to go externally.

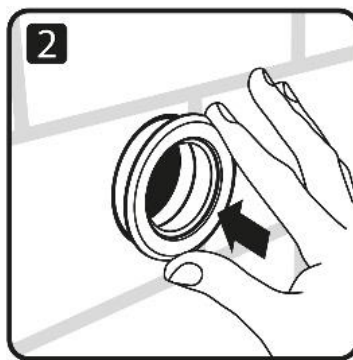
Core Drill Size	L (mm)	W (mm)	H (mm)	Wgt (kg)	Material (Part 1)	Material (Part 2)	Colours
52mm	75	75	28	0.024	Polypropylene with UV 91872 hindered amine light stabiliser (HALS) additive	TPE (thermoplastic elastomer) with heat and UV stabiliser	Black, White, Grey & Olive Grey



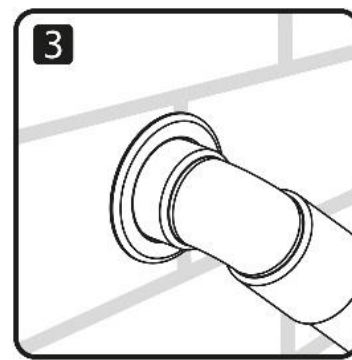
Installation Instructions



Core drill hole using standard 52mm core



Insert PipeSnug into core-drilled hole



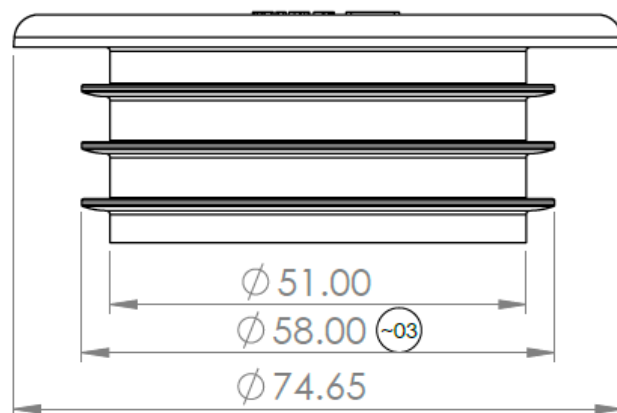
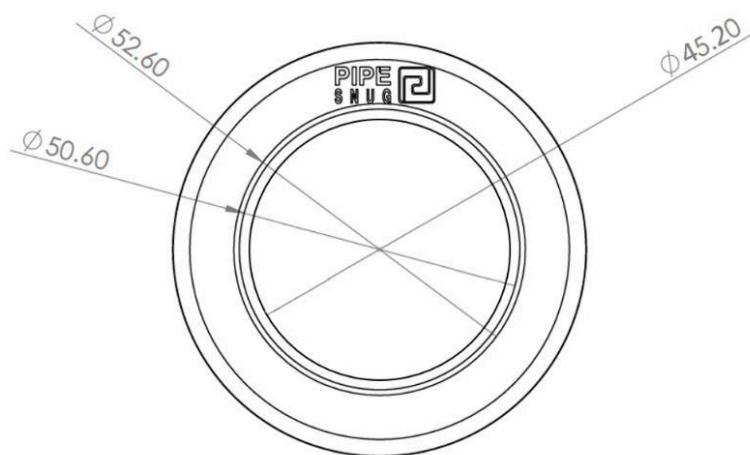
Connect up pipework in usual way



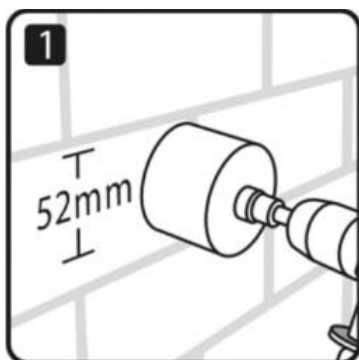
40mm

- Designed to fit 40mm 90 degree or swept solvent weld elbow bends (all UK manufacturer brands).
- Complies with Part L Building Regulations.
- Can be used internally and externally.
- For use with solvent weld waste pipe systems and boiler condensate pipes when fed into larger diameter 32mm waste to go externally.

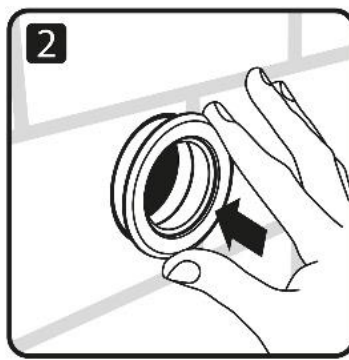
Core Drill Size	L (mm)	W (mm)	H (mm)	Wgt (kg)	Material (Part 1)	Material (Part 2)	Colours
52mm	75	75	28	0.018	Polypropylene with UV 91872 hindered amine light stabiliser (HALS) additive	TPE (thermoplastic elastomer) with heat and UV stabiliser	Black, White, Grey & Olive Grey



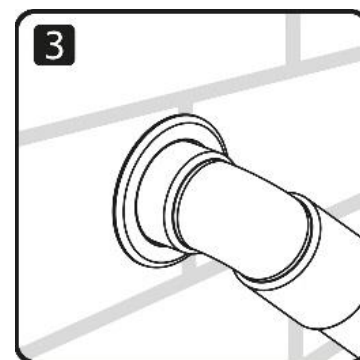
Installation Instructions



Core drill hole using standard 52mm core



Insert PipeSnug into core-drilled hole



Connect up pipework in usual way